



Riverside Newton Blossomville

Bedford, Buckinghamshire

oriordanbond
TOWN & COUNTRY



GROUND FLOOR
525 sq.ft. (48.8 sq.m.) approx.



1ST FLOOR
503 sq.ft. (46.8 sq.m.) approx.



Riverside Newton Blossomville

Bedford

MK43 8AL

GUIDE PRICE £400,000

Offered for sale by INFORMAL TENDER closing Friday 3rd June at 5.00pm. Please call O'Riordan Bond for viewing arrangements and further details of the tender process.

Riverside is an established semi detached house occupying a large garden plot with views directly over open fields and St. Nicholas' church. The accommodation comprises hallway, sitting/dining room, kitchen, utility room and ground floor bathroom. To the first floor are three double bedrooms and an ensuite shower room. Outside is a driveway leading to a single garage and workshop. The extensive garden plot means that Riverside is ripe for development and extension (STPP). (B/924/L)

Additional information

- Council Tax Band: C
- Energy Efficiency Rating: E

Viewing

Viewing strictly by appointment – details below

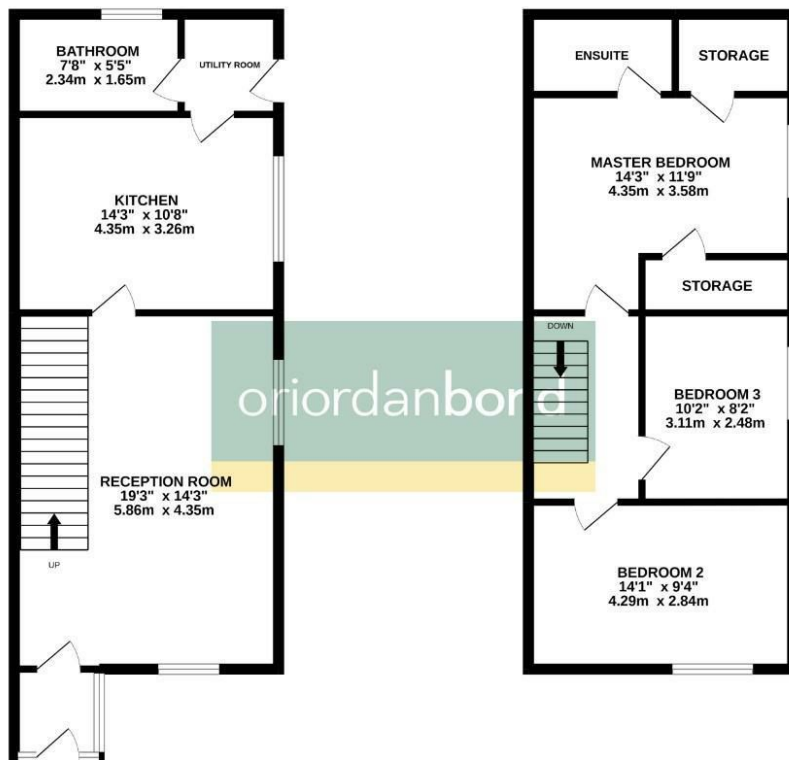
Disclaimer

O'Riordan Bond Estate Agents Limited has not tested apparatus, equipment, fittings or services and so cannot verify they are in working order. The buyer is advised to obtain verification from their solicitor or surveyor.

O'Riordan Bond Olney Sales

01234 714003

olney@oriordanbond.co.uk



TOTAL FLOOR AREA: 942sq.ft. (87.5 sq.m.) approx.

Whilst every attempt has been made to ensure the accuracy of the floorplan contained here, measurements of doors, windows, rooms and any other items are approximate and no responsibility is taken for any error, omission or misstatement. This plan is for illustrative purposes only and should be used as such by any prospective purchaser. The services, systems and appliances shown have not been tested and no guarantee as to their operability or efficiency can be given. Made with Homeplan 02022